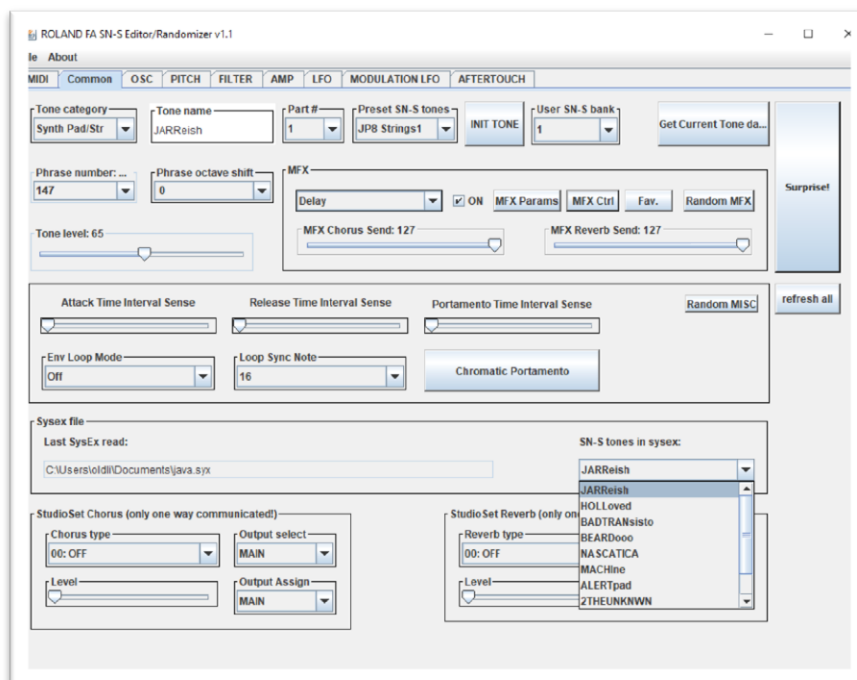


ROLAND FA

SN-S tone editor

v1.1



by



coded in



About the autor

Lipcsei István is a hungarian synthesizer loving and electronic musician in the ambient, chill, synthesizer music scene. His instruments not just instruments in his eyes, but technical challenges too.

The first thing what he did was a converter for KORG i5M. It's an arrangement synth modul from KORG what is based ont he AI synthesis like X5, i1, i5 and so on... He find a way to convert any of AI synthesizer based files and load it into the i5M. He got many timbres for i5M in this way ...

Later he wrote a JAVA based librarian application for KORG RADIAS synthesizer. It's not just a librarian – there is randomizer functions what are help the sound design process..

Now, he is present a JAVA based editor for the ROLAND FA series, specially for the SN-S tones. This application may help to you to:

- edit SN-S tones on your computer;
- randomize tone parameters to create individual, unusual, weired tones for your ROLAND FA;
- load system exclusive files what are created by ROLAND FA Dump;
- save edited tone into a sysex file in ROLAND FA dump format;

Lipcsei István spend a lot of time to create this software. Please donate him if you think that utility is usefully for you!



More information about his music, other softwares, patches and goodies on his website:

<http://lipi.atw.hu>



Credits:

I wish to thank for his kindly help for the designing, testing the software and understanding the FA's philosophy:

Leon Seaman < skijumptoes > (from rolandclan forum) test on MAC OS

<frank123> (from rolandclan forum) test on Linux

Csaba Koródi

Contents

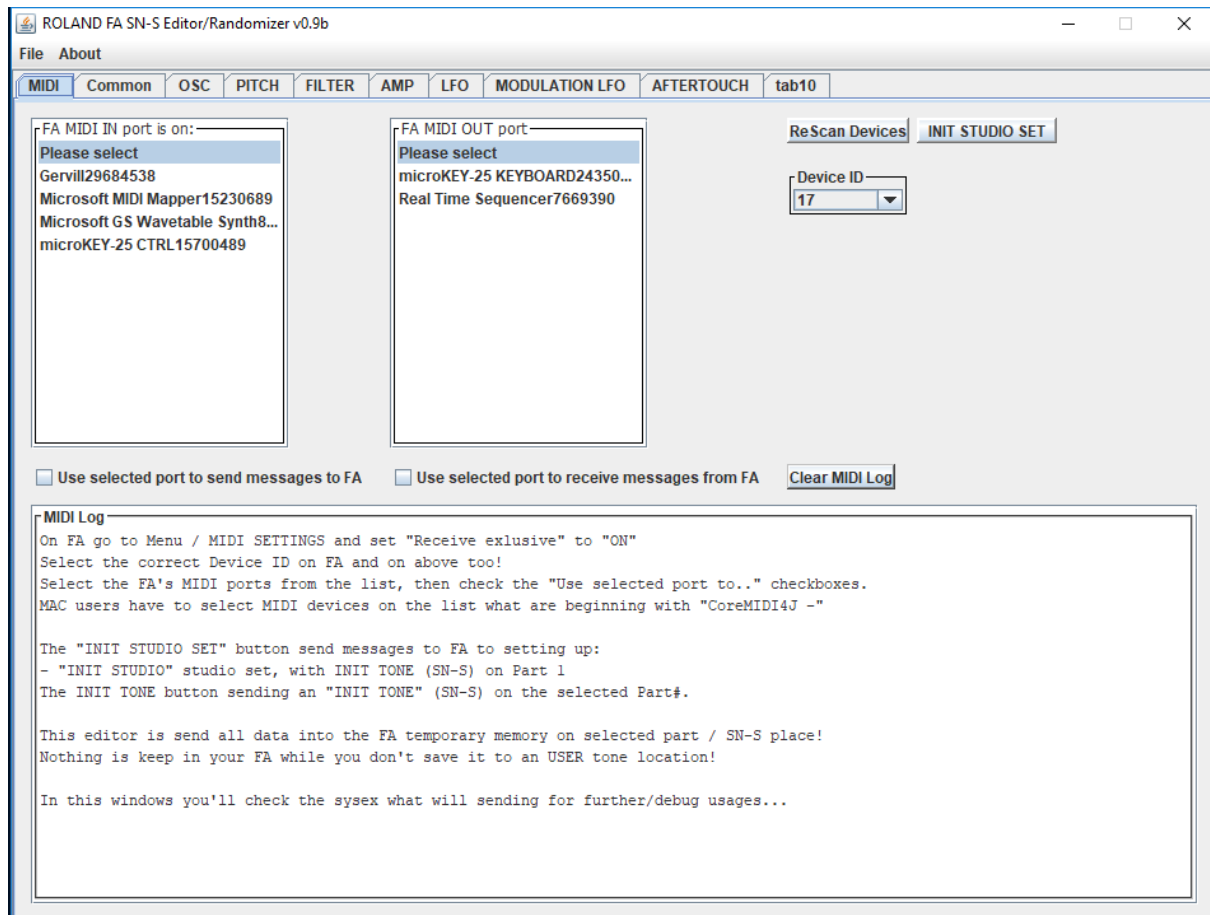
Contents	4
What is it?.....	7
What is not?	7
Known issues:	7
How to install?.....	9
1. Download/install JAVA	9
2. Download the ROLAND FA SN-S editor/randomizer	9
3. Create a folder on your computer.....	9
4. Unzip the all files with the directories into that folder	9
5. Make a shortcut on your desktop for the ROLANDFA.jar	9
How to use?.....	10
What's MIDI?.....	10
What is MIDI port?	10
What is system exclusive messages?	10
Synth Configuration.....	11
Software Configuration: The MIDI tab	11
The usage of the „Use selected port to send messages to FA” checkbox.....	11
[INIT STUDIO SET] button	12
DeviceID.....	12
The Log window.....	12
Common	13
Part#	13
[INIT TONE] button	13
SNS-S preset tones / User SN-S bank	14
[Surprise me!] button	14
[Get Current Tone data] button	14
[refresh all] button	14
MFX section	14
[Fav.] button	14
Studio set FX sections.....	16
Sysex file section.....	16

Saving sysex.....	16
OSC.....	18
Pitch.....	19
Filter.....	20
AMP.....	21
LFO.....	22
MODULATION LFO.....	23
AFTERTOUCHE.....	24
MFX Control.....	25
MFX Params.....	26
FAQ.....	27
It's free?.....	27
Why JAVA?.....	27
It is work on MAC?	27
It is work on Linux?.....	27
It is work on Windows 10 x64?.....	27
My FA does not recognize any/some messages!	27
I don't find my sysex file what I previously saved!.....	27
A lot MFX parameter doesn't work – my FA does not recognize what I doing in editor	27
I change the tone by select from the Preset SNS-S /USER tone list but nothing is happen on the screen	27

Copyright

All contents and materials of this book are copyright 2018. Lipcsei István, all rights reserved. Redistribution or publishing of this book in whole or part, in any form, without an agreement with the author is strictly prohibited and is subject to prosecution by law.

What is it?



The ROLAND FA SNS-S tone editor/randomizer (the software in follows) a JAVA based utility what is can:

- load SN-S tone data from a ROLAND FA (FA in follows) format sytem exclusive file (.syx);
- get any SN-S tone from FA and save it as system exclusive file;
- edit SNS-S tone parameters;
- randomize SN-S tone parameters;
- send any of the edited SN-S tone parameter to your FA across MIDI;
- save a SN-S tone into a system exclusive (.syx) file what you can share with others or you can store them for the future usage;

What is not?

- it's not a librarian;
- it's not an „All in one” editor;
- it's not a ROLAND official product;

Known issues:

- a lot of MFX type param edit not implemented yet;
- in some cases MFX parameters are not received correctly from FA;

How to install?

Because it's a JAVA based application the very first step is to install Java Runtime Environment 8 or later if you don't have yet.

1. Download/install JAVA

[You can download the last version of JRE from the JAVA website.](#) After the download install it. It's the runtime environment for the editor software.

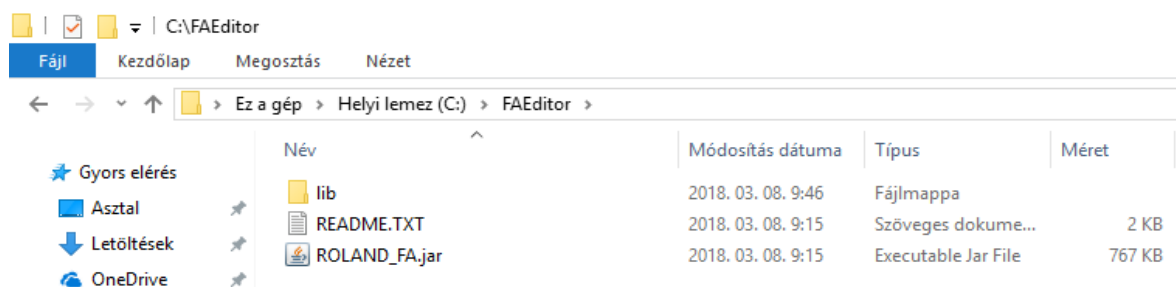
2. Download the ROLAND FA SN-S editor/randomizer

You can download the software from [Lipcsei István's web site](#). You will find the software on the Download, Synthesizers/ROLAND FA sections... You will download a zip file. It's contains all the necessary files to run the software except the JRE8 itself.

3. Create a folder on your computer

For example make a directory like this: C:\FAEditor

4. Unzip the all files with the directories into that folder



5. Make a shortcut on your desktop for the ROLANDEFA.jar

That's all! You are done! 😊

How to use?

Before we use the software let's clear some thing...

What's MIDI?

MIDI is an industry standard music technology protocol that connects products from many different companies including digital musical instruments, computers, tablets, and smartphones. MIDI does transmit data, MIDI does not transmit any sound.

What is MIDI port?

In addition to the original 31.25 kbit/s current-loop transported on [5-pin DIN](#), other connectors have been used for the same electrical data, and transmission of MIDI streams in different forms over [USB](#), IEEE 1394 a.k.a. [FireWire](#), and [Ethernet](#) is now common. Some samplers and hard drive recorders can also pass MIDI data between each other over SCSI.

On your computer these ports are represents for you by a name for example: FA, FA Ctrl, UM-1, RADIAS 1, and so on...

Across the MIDI IN port a device will recognize MIDI messages what is adressed to it from an other device.

Across the MIDI OUT port a device can send MIDI messages to an other device.

In our case your computer will the „sender” and your FA will the „recognizer”, so you have to got a connection like this: YOUR COMPUTER [MIDI PORT] →YOUR FA[MIDI IN port]. It's possible across a simple USB cable too.

What is system exclusive messages?

The general MIDI messages not cover all of your FA's possibility. Even so you can modify any of your FA's parameter from your computer or your other MIDI device (for example: master keyboard, controller, sequencer, etc.) by system exclusive messages. All message is a byte flow. All message start with F0 41 10 00 00 77 (we speak about ROLAND FA system exclusive messages only) and all message will end with F7 (in hexadecimal format). The ROLAND FA system exclusive messages are listed in the official „MIDI Implementation”. Unfortunately it's not updated after the 2.01 firmware, so there is some parameter what are missing from that documentation.

It's strongly recommended to use/read the original FA's „Parameter guide” and „Reference guide” by Roland to complement the editor possibilities!

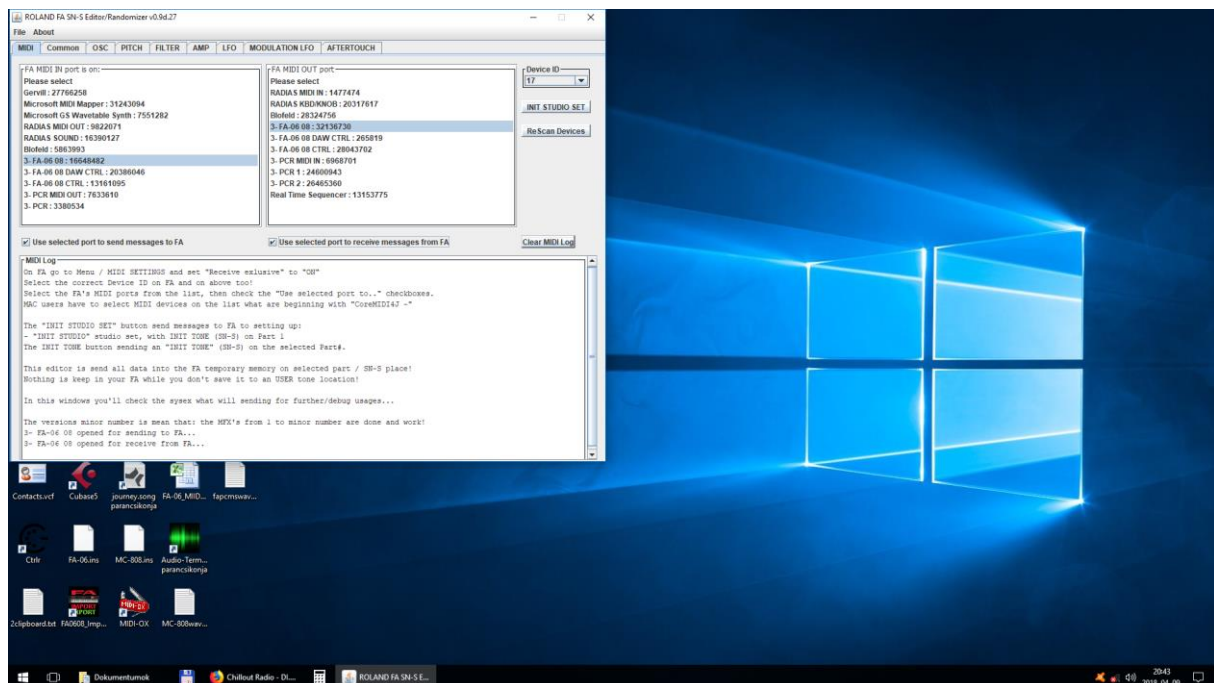
Synth Configuration

For use this software with your Fa, you should setting this MIDI parameters on your synth:

- Receive Program Change: ON
- Receive Bank Select: ON
- Receive Exclusive: ON

Software Configuration: The MIDI tab

The first tab on the software surface is the MIDI tab. Here you can select your computer's MIDI port what is connected to your FA's MIDI IN.



The usage of the „Use selected port to send messages to FA” checkbox

Generally when you use a software what is use MIDI port you may close and restart the software if you want to add or remove a MIDI device from your software's device list. It is also happens, you can't use a MIDI port by a software, because it's used an other software... Did you ever were in that situation?

Forget it! 😊 You don't have to close and rerun this software at all.

When you connected a new MIDI device what is not in the list, just press the **[ReScan Devices]** button and there will be. Now you can select it.

When you disconnected a device from your computer just press the **[ReScan Devices]** button and the missing device is removing from the device list.

When you want to use the same device in the editor and an other software (for example in your DAW) you can do that simultaneous in Windows system, if you start the editor first, and the other software later.

When you want to „release” the selected MIDI device just uncheck the „Use selected port to send messages to FA” checkbox and the other softwares will be seen it like „free” port. It possibly to you to use the editor and your DAW simultaneous. You edit the tone in the editor, then „test” it by a sequence from your DAW, and back, and so on... And you don't need to close/rerun your applications.

In case of some DAW (for example Presonus Studio One) if you start the DAW first then the editor, you can send sequence from your DAW and send data edit from the editor int he same time without the „Use selected port to send messages to FA” checkbox changing.

When you want to send data to your FA just check the „Use selected port to send messages to FA” checkbox and the editor software will use the selected port again.

MAC users have to select MIDI devices on the list what are beginning with "CoreMIDI4J -"

Note that: for sending data to your FA you have to select a valid port and! you have to check the „Use selected port to send messages to FA” checkbox, and! you have to select the correct DeviceID too!

You have to do the settings same way about the FA MIDI OUT port settings too for can get data from FA.

If any of these are not selected/correct the editor will not send correctly the messages to your FA or not send at all.

If you forget to check, select something; when it will necessary the editor will inform you by pop up messages!

[INIT STUDIO SET] button

When you press it, and the MIDI sending is possible the software will change FA's current studio set to the INIT STUDIO SET with an INIT TONE (SN-S) on Part 1.

DeviceID

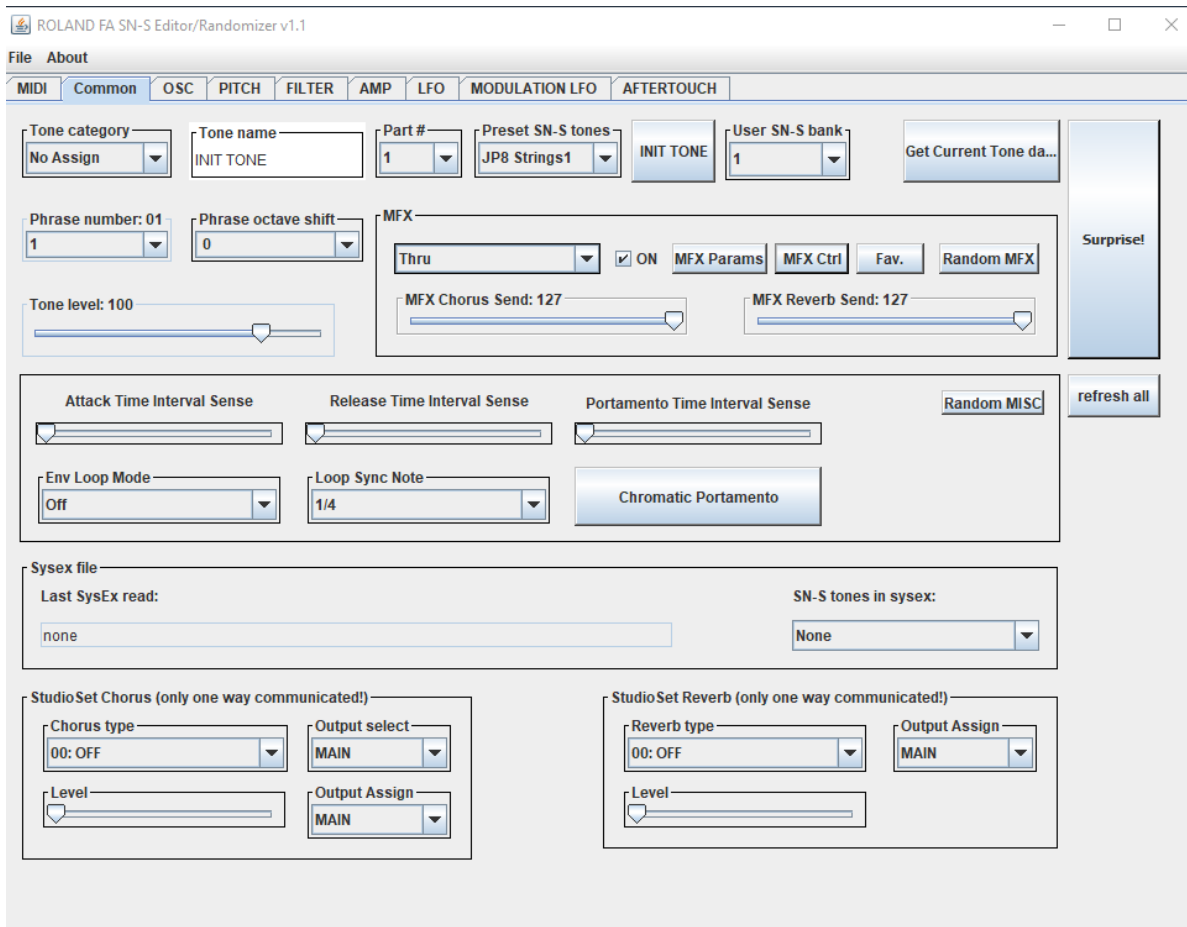
You have to select your FA's correct device ID. It's important for addressing the MIDI system exclusive messages. You can find/modify your FA's DeviceID in your FA's System menu/MIDI page.

The Log window

Any of important information and the sended messages are will in this window. You can clear the window by the **[Clear MIDI log]** button.

Common

On the Common tab you can find the most common functions...



The most on this screen is the same parameter as on your FA's screen. What is more there?

Part#

Here you can select which part will you use. It's influence the system exclusive messages addressing too. All of the tone parameters and changes will be affected on the selected part including the get tone function and the sysex loading whatever was the original place of the loaded sysex data! So if you have a sysex data from Part 1 and you want to load it into the Part 9 just do it! 😊

Note that! When you want to use first time other part then 1, you have to set the given part to a SN-S tone. You can do it on FA or, you can select a preset tone from the list next to the [INIT TONE] button.

[INIT TONE] button

With that button you can „reset” your SN-S tone on the actual part to the „INIT TONE”.

SNS-S preset tones / User SN-S bank

From that list you can select one of the 1115 preset and 512 user SN-S tone to load the given part. It will send a bank select MSB, bank select LSB and a program change message to your FA's given part.

This tone parameters are not refreshing in the editor if your MIDI settings are not correct to receive sysex messages from your FA. It's good for you if you want to use a preset tone for scratch instead of INIT TONE before edit/randomize.

[Surprise me!] button

When you press that button, the editor will randomize almost all parameter and (if it's possible) send to your FA.

[Get Current Tone data] button

After you pressed this button, and the MIDI settings are correct, the editor will get the tone from the given part. If it's a SN-S tone the editor's parameters are refreshing. If the FA is not responding to the identity request, the tone data will not be requested. If the received first tone part is not a valid SN-S common data, the following data packs (MFX, Partial1~3, MISC) will not be requested.

If you made any changes on the tone by your FA controllers instead of the editor, this is the way to integrate your new tone data into the editor...

[refresh all] button

If you used the editor „offline“ and then you still want to send the data to your FA, you will find that button usable. When you pressed that button all of the parameters are refreshing from the editor temp tone memory and -if meanwhile you enabled the MIDI send- the FA temporary memory too.

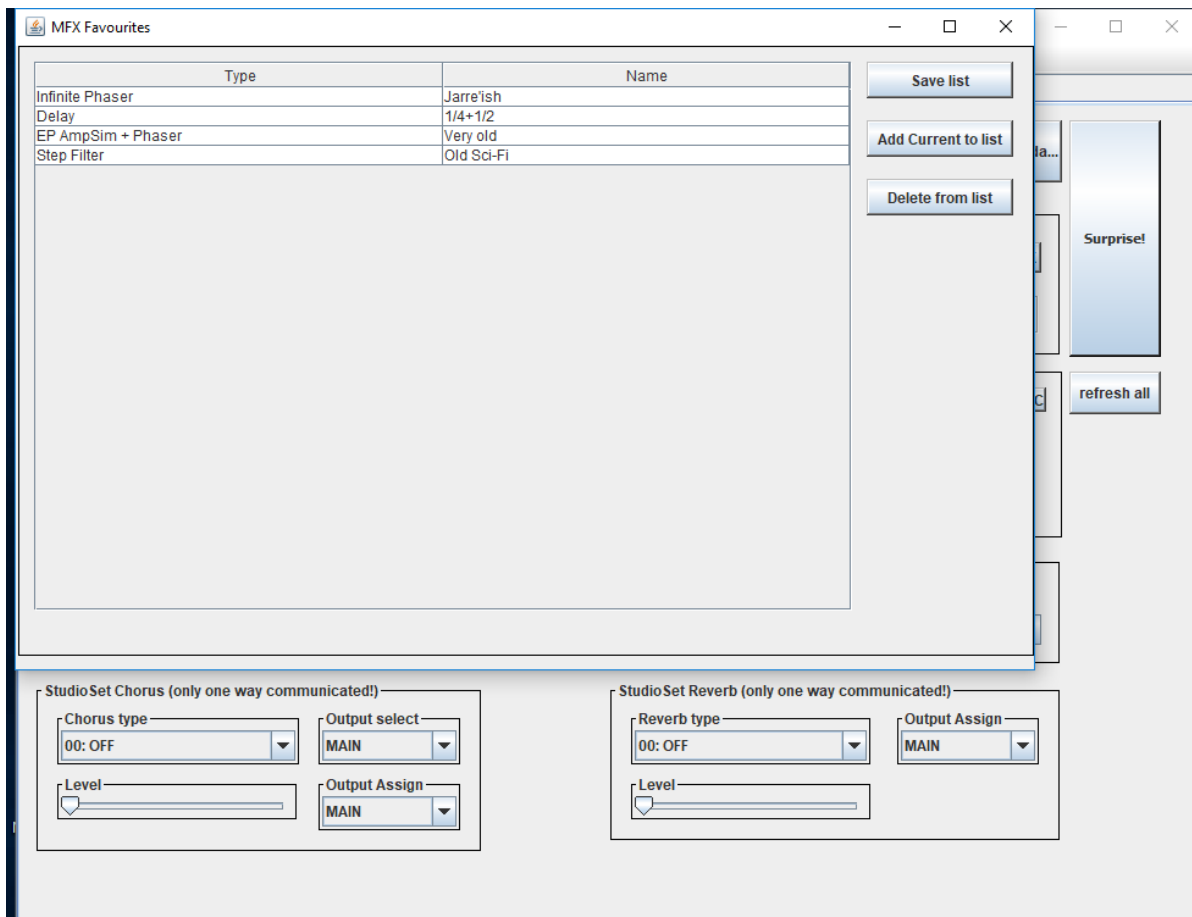
MFX section

The On/Off checkbox is switch the MFX on/off. You can select MFX type from the list. When you select a new MFX type the editor's „template tone“ MFX section will filled by factory default MFX settings (same as in your FA). You can edit the MFX parameters by hit the **[Params]** button in a new window, and the MFX Control parameters by hit the **[MFX Ctrl]** button in a new window. These MFX windows are still opened while you don't change the MFX type or you don't close them. The **[Random MFX]** button will give you a new MFX type by randomly selected... If it's happened the MFX Parameters and MFX Control windows will close and the Chorus/Reverb send parameters are setting for the randomly selected MFX type's factory defaults.

[Fav.] button

You can save your favourite MFX settings and you can call back them by a mouse click. ;) How?

Select a MFX, take the tweak... Set all parameter what you want, then press the [Fav.] button. The following screen will appear:



In the table there is your saved favourite MFX's. You can add a new now, just press the **[Add current to list]** button, then (optionally) the **[Save list]** button. Your favourite MFX now just a click and there will be in the FA!

You can sort of your presets by name or category; just click on the header!

You can edit the preset name after you doubleclick on the name field. The name length is max. of 32 characters.

The category name can not changed! So you can give any name to the preset, none after several years you will know instantly what kind of MFX is that.

You can send to FA only one favourite MFX preset at once. Multiple selections not allowed to send to FA. You can send by mouse click or the PC keyboard: ENTER.

You can delete a preset by the Del key on your PC keyboard, or by pressing the [Delete from list] button. Multiple selection is allowed for delete, so be carefully!

Tip: if you accidentally delet a preset, don't save the list! Close the editor and reopen. If you don't saved the modified list, the original presets are came up!

If you press the [Save] button there is no way to undo changes!

The favourite MFX presets are in a file: mxfav.dat in the same folder where is ROLAND_FA.jar. So if you want to archive your presets, archive that file. While you not save any MFX preset the

mxfav.dat file will not be created. The editor will inform you that fact – it's not an error. After the first save, every starting of the editor, the favourites are loaded automatically.

Tip: if you don't want to use the MFX Favourites feature, and you feel disturbed by the information „There is no file...” save an empty list - the editor will be quiet at start in the future... ;)

Studio set FX sections

There are two panels on the bottom of Common tab. The Studio set Chorus and the Studio set Reverb panels. What have you to know about these panels?

1. These are just sending data to FA. These parameters are not read from a studio set sysex and these are not read from FA when you did a dump.
2. These are not check if the Studio set Chorus and/or Reverb is set to On – should you check them on FA when you want to use these FX's...
3. The most common reason why they are is to can change studio set FX types and FX levels to hear when you change the tones Chorus Send and Reverb Send levels are how to affect the tone...

Sysex file section

When you load a sysex file by „File/Open SysEx” or by pressing „Ctrl+O” the last loaded, valid FA sysex file's name will be shown.

You can load 2 kind of FA system exclusive file. One of contains a complete studio set with tone parameters, and one of a single tone sysex. If the last loaded sysex file contains more than one SN-S tone (for example it was a complete studio set) these SN-S tones are will in the list: „SN-S tones in sysex” combobox. You can select any of the SN-S from this list.

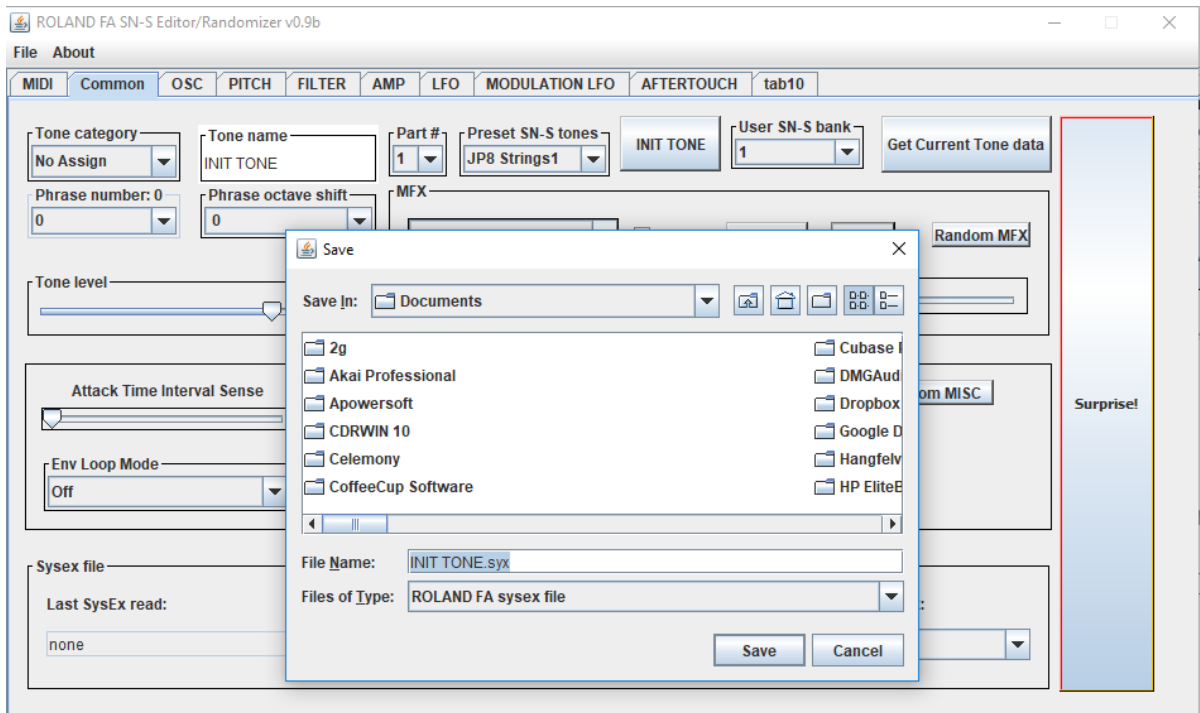
When you select a tone from the preset/user list, it will be send a program change to your FA and will be get the tone data into the editor's temporary memory from the FA if it's available. You can edit the tone while you want.

When you select a tone from the preloaded sysex tone list, all tone data is representing in the editor's temporary memory and will sending to FA if it's available.

If you want to keep the tone what is in editor's temporary memory you have to save it before change to an other tone! When you change the tone from the list or from the FA you'll change the temporary memory too! It's familiar as you edit a tone in your FA...

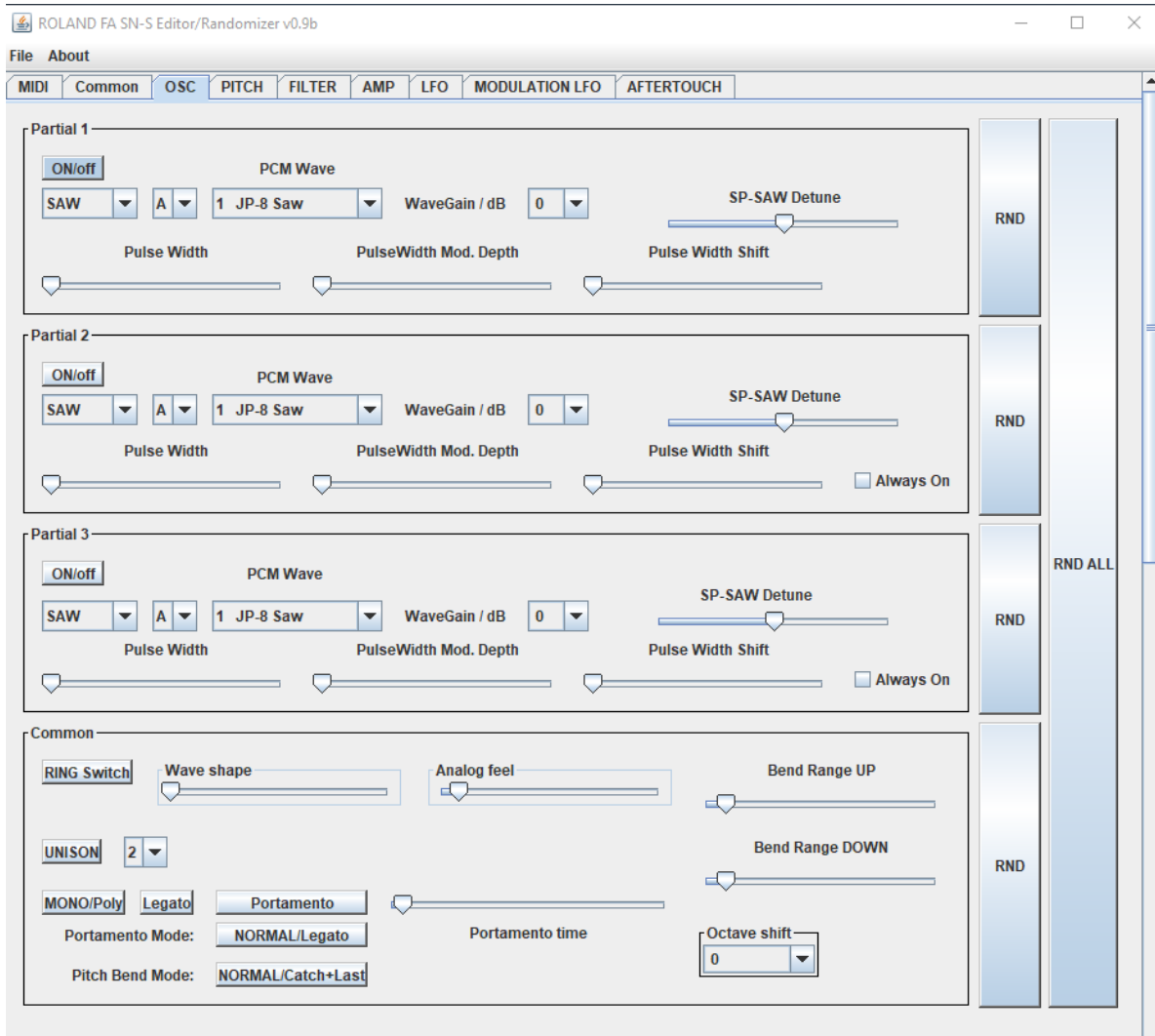
Saving sysex

You can do it by „File/Save to SysEx” menu or by pressing Ctrl+S keys. The current tone name will represent as mentioned sysex file name. Of course you can modify that before save.



OSC

When a parameter is changed even by hand or randomizer, the changes will be send to the FA if it's possible. It's prevalent on the following tabs too.

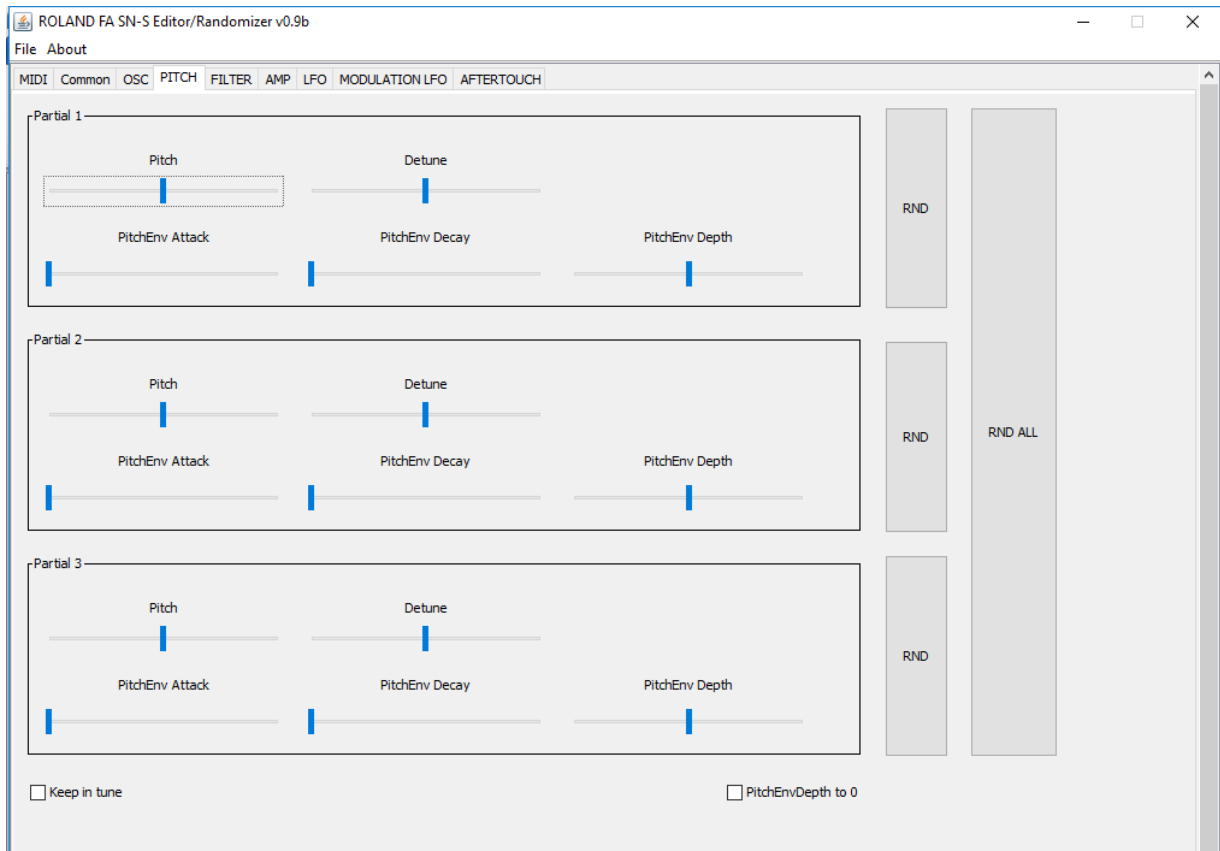


Some of the originally common parameters are here on the bottom of page.

The **[RND]** buttons are randomize the section parameters to left to buttons. The **[RND ALL]** button will randomize both of 3 partials OSC sections. If the „**Always On**” is checked, the oscillator will always set to On.

Anyway the parameter are same as on your FA in „proedit” mode.

Pitch



The **[RND]** buttons are randomize the section parameters to left to buttons. The **[RND ALL]** button will randomize both of free partials Pitch sections.

When the „**Keep in tune**” checkbox is checked, the Pitch parameters will not be randomized.

When the „**PitchEnvDepth to 0**” checkbox is checked, the PitchEndDepth parameters will allways be 0.

Anyway the parameter are same as on your FA in „proedit” mode.

Filter



The **[RND]** buttons are randomize the section parameters to left to buttons. The **[RND ALL]** button will randomize both of 3 partials Filter sections.

You can set the envelopes for three kind of timbres:

- **[EnvToPiano]** button will set the ADSR parameters to a piano like ADSR;
- **[EnvToOrgan]** button will set the ADSR parameters to a organ like ADSR;
- **[EnvToPads]** button will set the ADSR parameters to a pad/strings like ADSR;

The „HPF Cutoff” parameters are not randomized.

Anyways the parameter are same as on your FA in „proedit” mode.

AMP



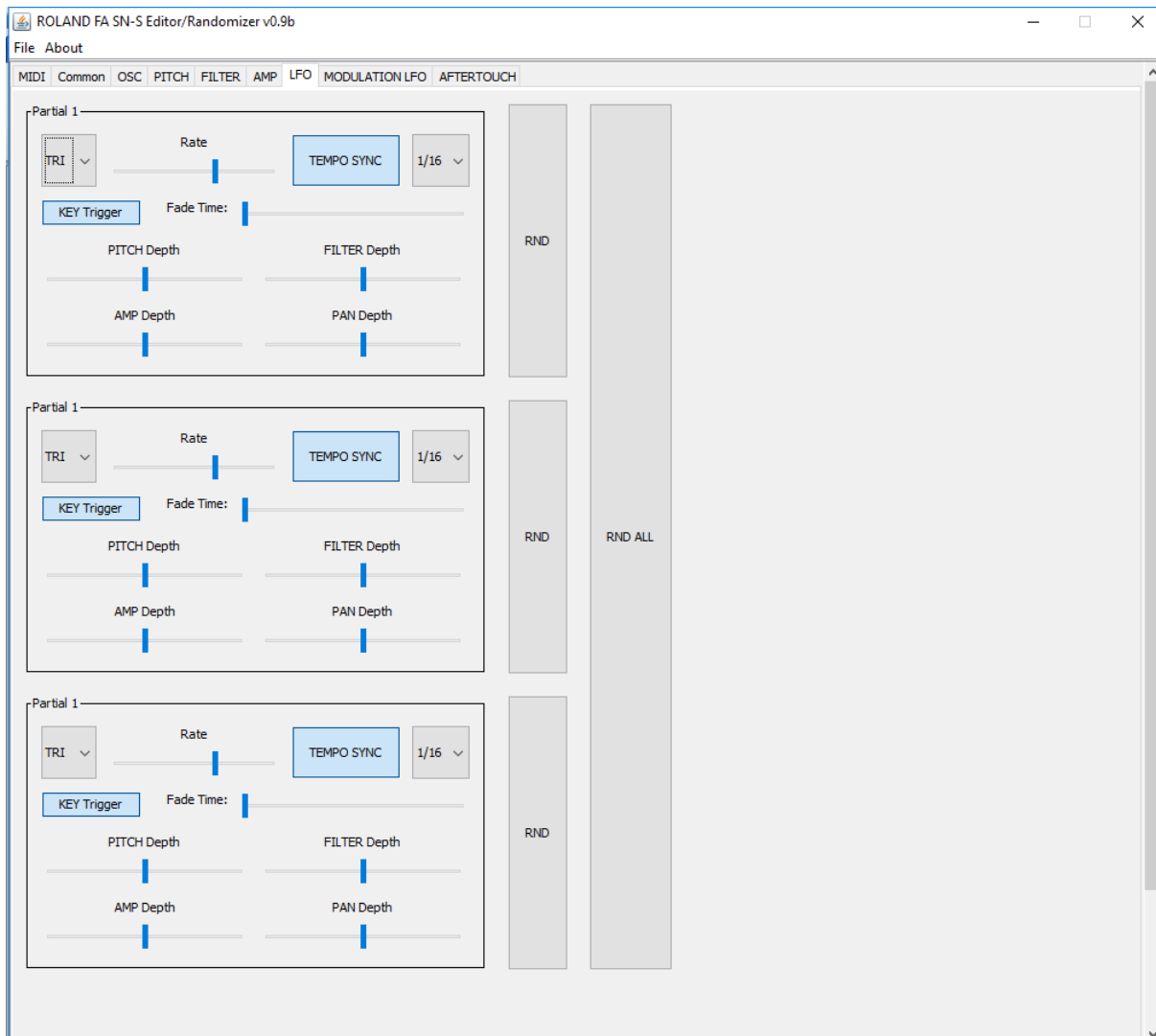
The **[RND]** buttons are randomize the section parameters to left to buttons. The **[RND ALL]** button will randomize both of 3 partials AMP sections.

You can set the envelopes for three kind of timbres:

- **[EnvToPiano]** button will set the ADSR parameters to a piano like ADSR;
- **[EnvToOrgan]** button will set the ADSR parameters to a organ like ADSR;
- **[EnvToPads]** button will set the ADSR parameters to a pad/strings like ADSR;

Anyway the parameter are same as on your FA in „proedit” mode.

LFO



The **[RND]** buttons are randomize the section parameters to left to buttons. The **[RND ALL]** button will randomize both of 3 partials LFO sections.

Anyway the parameter are same as on your FA in „proedit” mode.

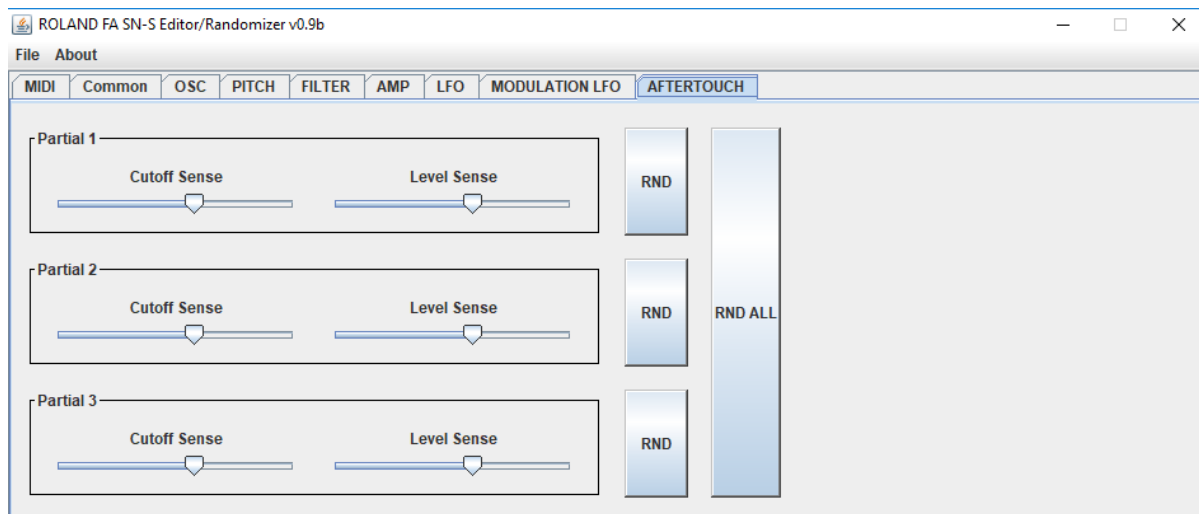
MODULATION LFO



The **[RND]** buttons are randomize the section parameters to left to buttons. The **[RND ALL]** button will randomize both of 3 partials MODULATIONLFO sections.

Anyway the parameter are same as on your FA in „proedit” mode.

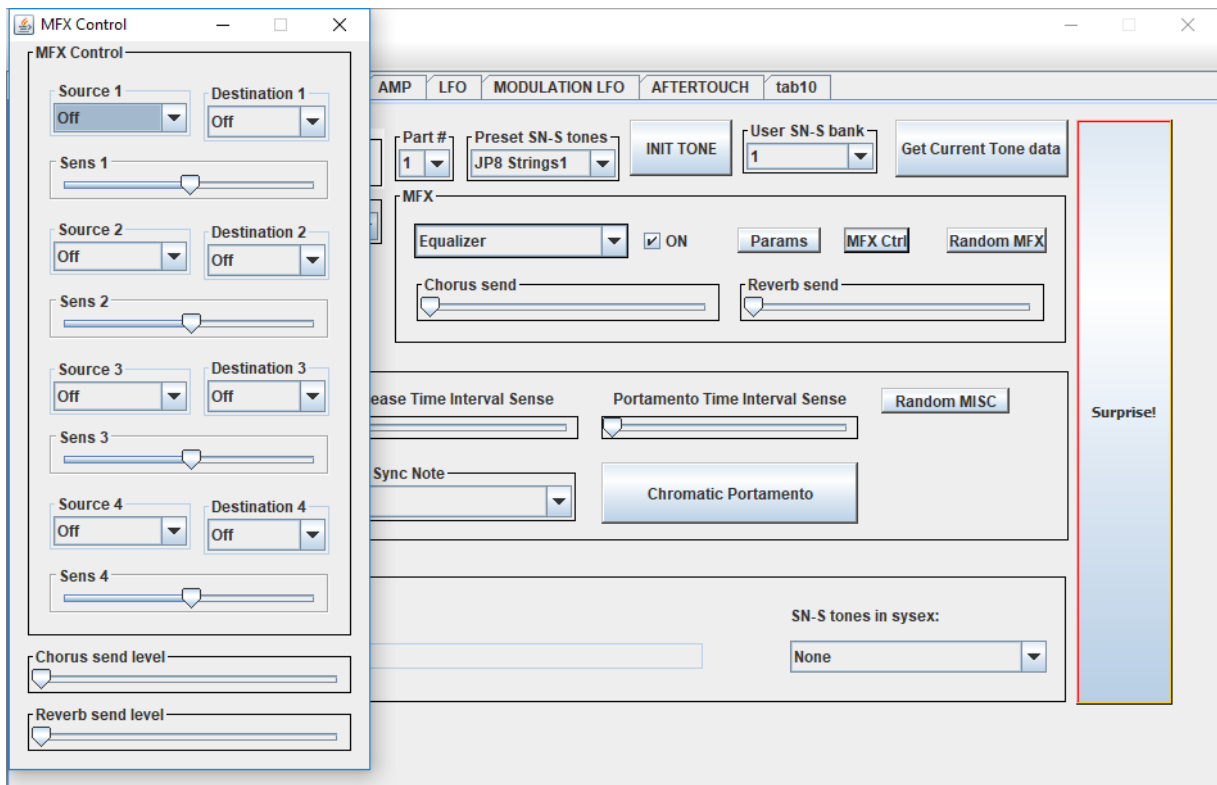
AFTERTOUCH



The [**RND**] buttons are randomize the section parameters to left to buttons. The [**RND ALL**] button will randomize both of 3 partials AFTERTOUCH sections.

Anyway the parameter are same as on your FA in „proedit” mode.

MFX Control

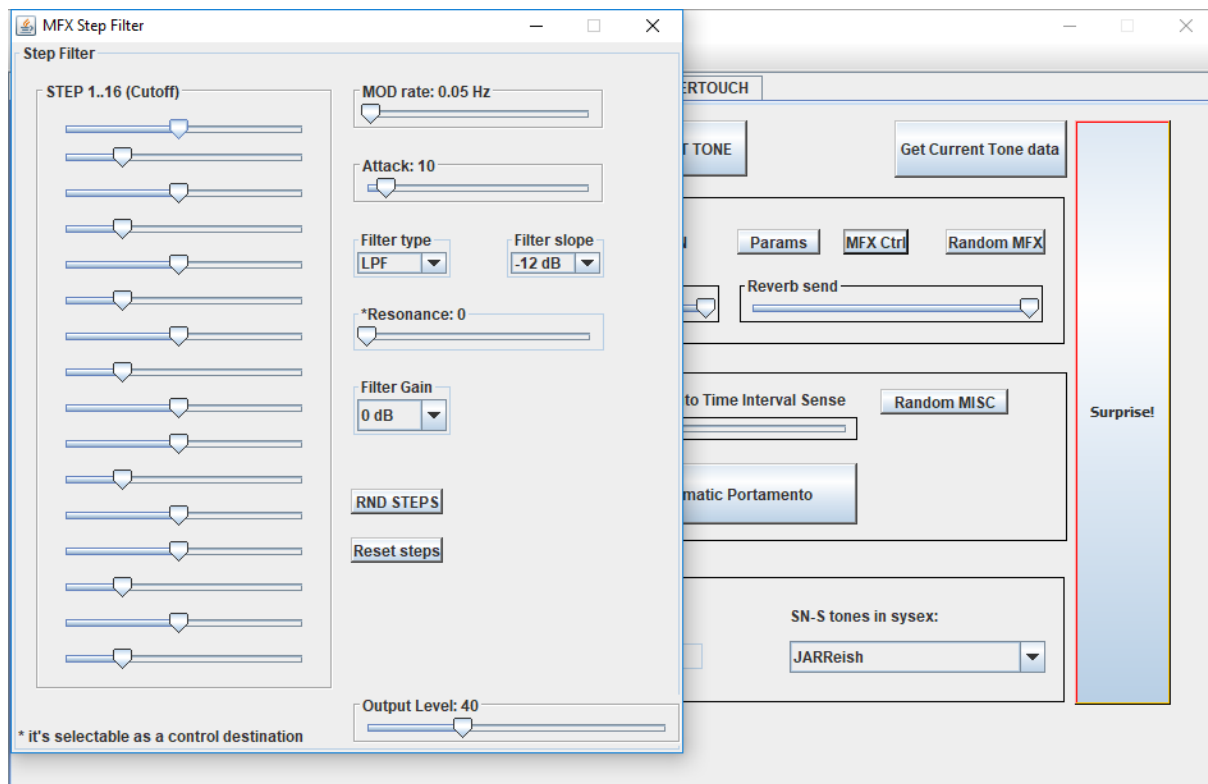


As you seen above when you press the **[MFX Ctrl]** button a new windows is popup.

The MFX Control Destination list don't refreshing yet nowwith params names – it's contains the MFX param #.

If you change the the MFX type or the loaded temporary tone (eg.: program change, sysex load, etc.) the MFX Control window will close. When you reopen it's will show the new data set familiar as on your FA editing sessions.

MFX Params



Each of all MFX type has own MFX Parameter window. This window will popup when you press the **[Param]** button.

The parameters are same as on your FA.

The MFX parameters are not randomized, except some kind of data like the Step filter MFX type filter steps... If a parameter randomizing is available you'll find the **[RND]** button on the MFX parameter window.

If you change the the MFX type or the loaded temporary tone (eg.: program change, sysex load, etc.) the MFX Parameter window will close. When you reopen it's will show the new data set familiarly as on your FA editing sessions.

FAQ

It's free?

Yes it is. However the author spend a lot time with programming and testing so if you feel it's a good utility for you please donate the author! <https://www.paypal.me/lLipcsei>

Why JAVA?

Because I want to make a utility what is platform independent.

It is work on MAC?

The MAC's java implementation is broken. Can't send/receive system exclusive messages just short/realtime messages. From the version v0.9c I did try to resolve this problem, but I don't have MAC – so it's a not tested, dark side of the editor...

It is work on Linux?

Yes, it is.

It is work on Windows 10 x64?

Yes it is.

My FA does not recognize any/some messages!

Be sure you are

- selected the correct port from the ROLAND FA MIDI IN port list (the FA DAW and FA CTRL are not correct ports in this case);
- checked the „Use selected port to send messages to FA” checkbox;
- selected the correct DeviceID;
- the connection between your FA and your PC is valid;

I don't find my sysex file what I previously saved!

Probably you edited acidently the .syx file extension for something else and saved the file with that name. Select the „All files” on the file filter and try to search for name...

A lot MFX parameter doesn't work – my FA does not recognize what I doing in editor

Yes... I know... There are more then 60 types of MFX on FA and I finished just a few. I'm working on the each MFX types continously. When a not or a not fully implemented MFX param window pop up there is a message so –in theory- you should know which one MFX is editable from editor and which not!

I'm working on MFX panels day by day... Please listen for the updates!

I change the tone by select from the Preset SNS-S /USER tone list but nothing is happen on the screen

You use the editor without enabled MIDI receiving. Check the settings on the MIDI tab!